

June 11, 2007

**Inventory of Concurrent Accreditation and Key Performance Indicators
University of California, San Francisco**

(1) Name of accredited or certificated program	(2) Professional, special, state¹, or programmatic accreditation agency for this program	(3) Date of most recent accreditation action by agency	(4) Summary (“bullet points”) of key issues for continuing institutional attention identified in agency action letter or report	(5) One performance indicator accepted by the agency; selected by program	(6) For one indicator, provide 3 years’ trend data. Use link to cell for graph if desired.
School of Dentistry	Commission on Dental Accreditation	2005	No recommendations were received. School of Dentistry accorded full accreditation with no reporting requirements.	National Board Part I Examination Scores – aggregate data by year	Please refer to table on Pg. 5.
School of Medicine	Liaison Committee on Medical Education (LCME)	2003	Ensure comparability of educational experiences across teaching sites Assess impact of Mission Bay site on faculty, students and programs Assess ongoing support from the new leadership for and commitment to the educational revitalization	National Board of Medical Examiners (NBME) U.S. Medical Licensing Examination (USMLE) Step1 and Step 2	Please refer to tables on Pgs. 6-10.

(1) Name of accredited or certificated program	(2) Professional, special, state², or programmatic accreditation agency for this program	(3) Date of most recent accreditation action by agency	(4) Summary (“bullet points”) of key issues for continuing institutional attention identified in agency action letter or report	(5) One performance indicator accepted by the agency; selected by program	(6) For one indicator, provide 3 years’ trend data. Use link to cell for graph if desired.
School of Medicine (cont.)			Successfully achieve intended outcomes with the implementation of the new curriculum Sufficiency of small-group learning space		
School of Nursing -- Masters in Nursing Program	Commission on Collegiate Education for Nursing	2001	Provide scores on specialty examinations and make these more consistently available	Scores on specialty examinations by advanced practice specialty	Scores on specialty exams are tracked consistently each year. Please refer to table on Pg. 11.
School of Nursing -- UCSF/San Francisco General Hospital Interdepartmental Nurse-Midwifery Education Program	American College of Nurse-Midwives Division of Accreditation	2002	None identified	Successful student certification by the American Midwifery Certification Board (AMCB)	Number of graduates and pass rates on AMCB certification exam: 2004: 11 (100%) 2005: 12 (100%) 2006: 11 (100%)

(1) Name of accredited or certificated program	(2) Professional, special, state³, or programmatic accreditation agency for this program	(3) Date of most recent accreditation action by agency	(4) Summary (“bullet points”) of key issues for continuing institutional attention identified in agency action letter or report	(5) One performance indicator accepted by the agency; selected by program	(6) For one indicator, provide 3 years’ trend data. Use link to cell for graph if desired.
School of Nursing -- Master’s Entry Program in Nursing	California Board of Registered Nursing	2003	None identified	National Council of State Boards of Nursing (NCLEX) pass rate Retention rate	Data on NCLEX pass rate is 98- 100% for 2003- 2006
School of Pharmacy -- Doctor of Pharmacy Program	Accreditation Council for Pharmacy Education (ACPE)	2002	ACPE report 2002 noted program for excelling in many areas. The following issues were identified as key issues for improvement: <ul style="list-style-type: none"> • stabilization of support for a critical nucleus of faculty in the Department of Clinical Pharmacy • provision of financial resources adequate to support the Doctor of Pharmacy program and other School needs • staff and infrastructure support. • improvements to the quantity, quality and location of space available to the School. 	Pass rate on licensure exams North American Pharmacist Licensure Examination (NAPLEX) and California Pharmacist Jurisprudence Examination (CPJE)	NAPLEX and CPJE pass rates 2004-2006. Please refer to tables on Pgs. 12-14.

(1) Name of accredited or certificated program	(2) Professional, special, state⁴, or programmatic accreditation agency for this program	(3) Date of most recent accreditation action by agency	(4) Summary (“bullet points”) of key issues for continuing institutional attention identified in agency action letter or report	(5) One performance indicator accepted by the agency; selected by program	(6) For one indicator, provide 3 years’ trend data. Use link to cell for graph if desired.
School of Pharmacy -- Doctor of Pharmacy Program (cont.)			<ul style="list-style-type: none"> • curricular refinements that have been made following initial assessments of the new curriculum. • continued and in-depth development of pharmacy practice facilities. 		

**UCSF School of Dentistry
National Board Dental Examinations Part I**

Year Reported	Test Date	Rank	% First-time Pass	Mean Score	National Mean
2005 *	11/1/03 – 10/31/04 **	9	98.7	87.16	85.12
2006	11/1/04 – 10/31/05 †	4	97.6	88.46	84.74
2007 ††	11/1/05 – 10/31/06	No longer ranked	100%	88.01	85.49

* Dental School Profiles Part I of the National Board Dental Examinations, February 4, 2005

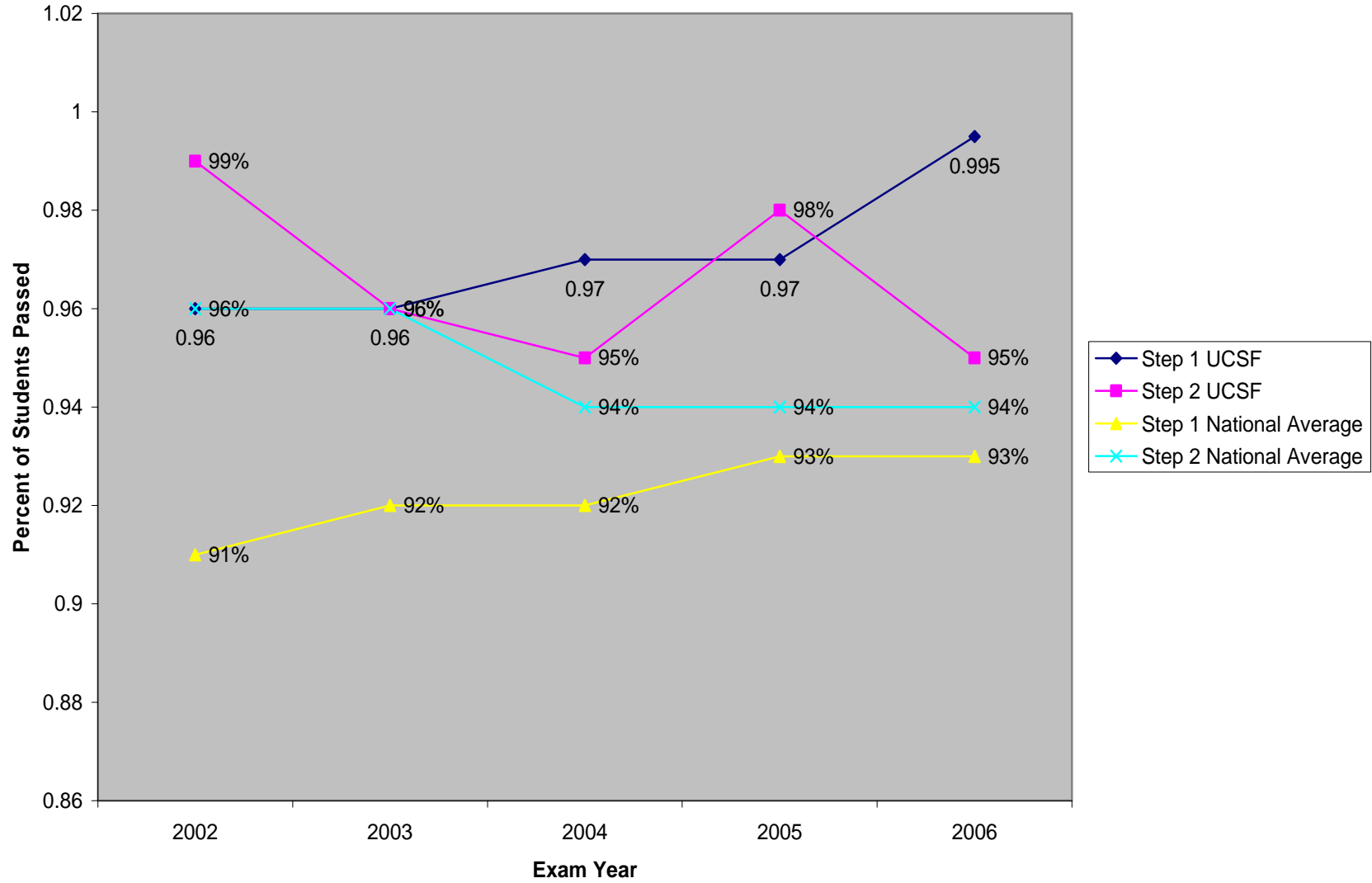
** Exams now provided in computerized versions with no set test date

† Dental School Profiles Part I of the National Board Dental Examinations, December 15, 2005

†† From Dental School Profiles Part I of the National Board Dental Examinations, April 25, 2007

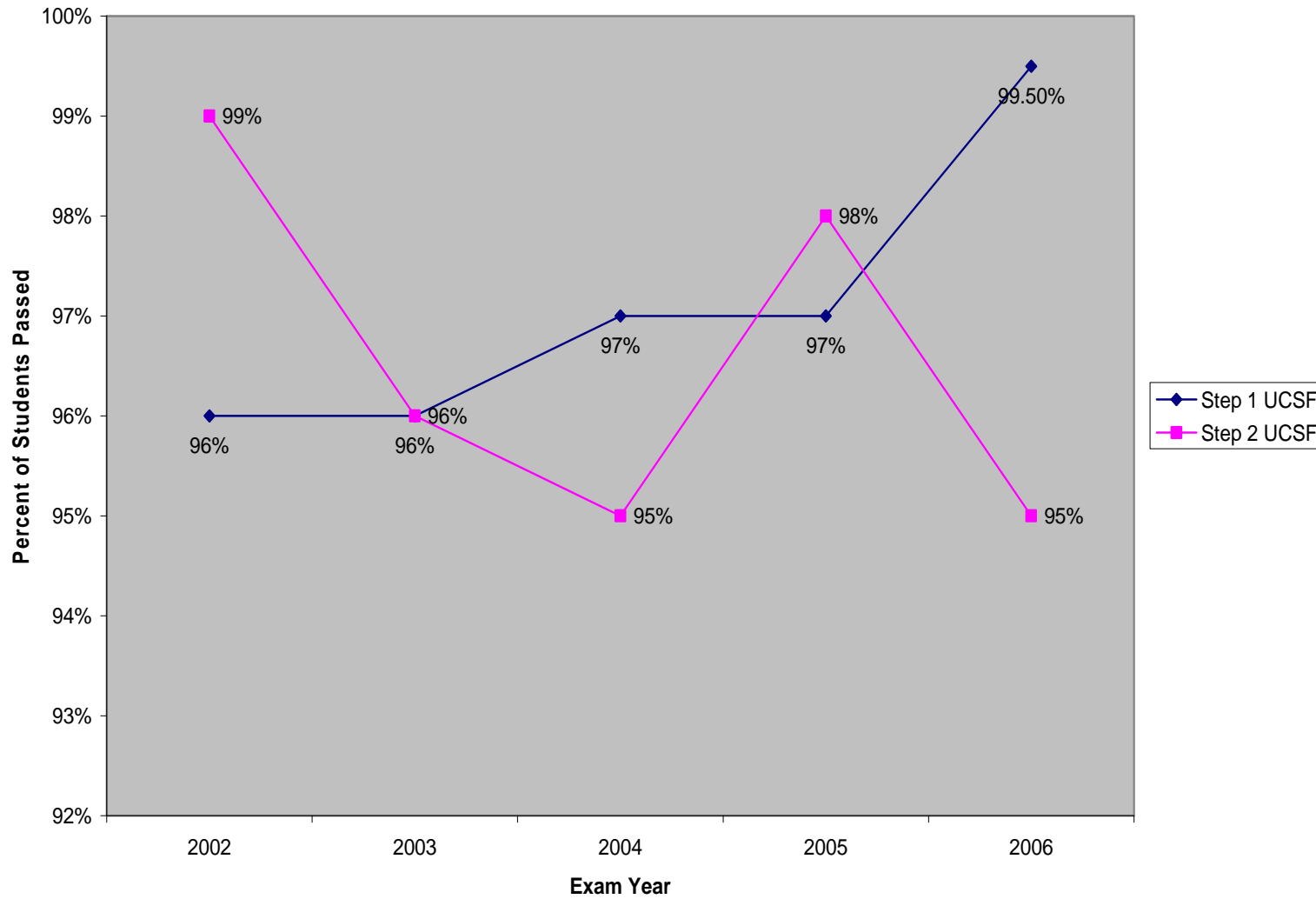
UCSF School of Medicine U.S. Medical Licensing Examination (USMLE)

USMLE Results



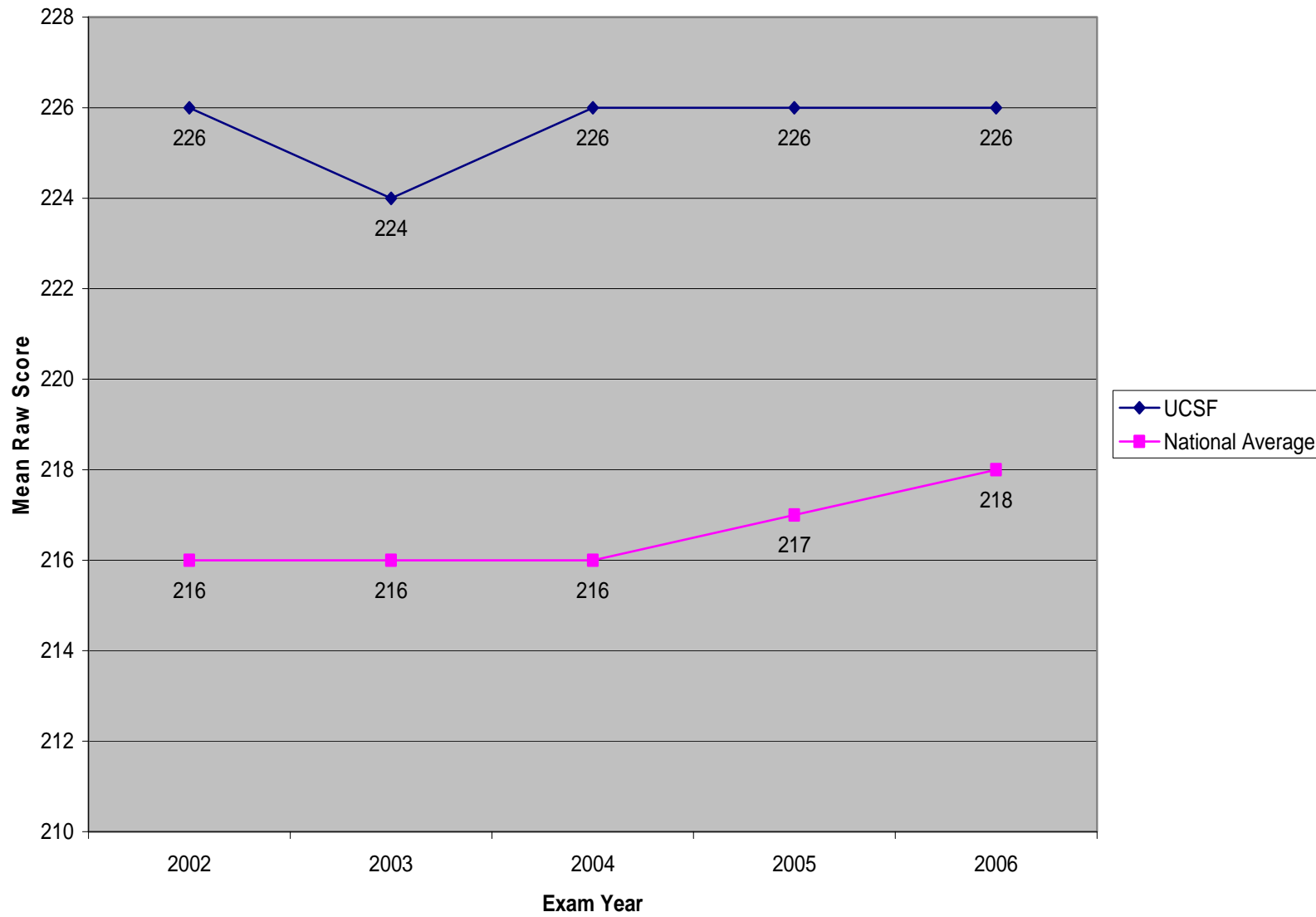
UCSF School of Medicine U.S. Medical Licensing Examination (USMLE)

USMLE Results



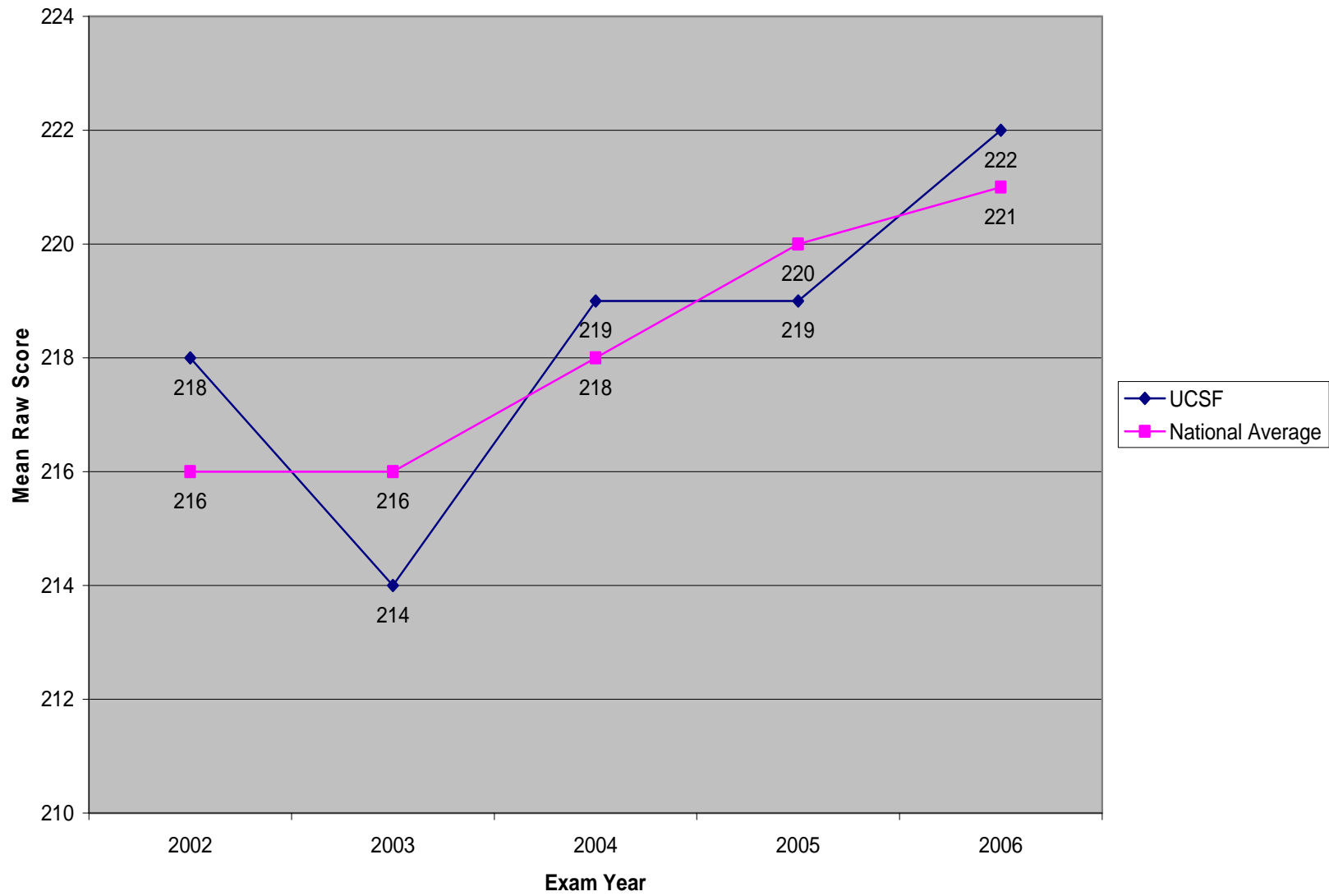
UCSF School of Medicine U.S. Medical Licensing Examination (USMLE)

USMLE Step 1



UCSF School of Medicine U.S. Medical Licensing Examination (USMLE)

USMLE Step 2



UCSF School of Medicine Source Data

	2002	2003	2004	2005	2006
step1UCSF % passing	96%	96%	97%	97%	99.50%
step2UCSF % passing	99%	96%	95%	98%	95%
step1national % passing	91%	92%	92%	93%	93%
step2national % passing	96%	96%	94%	94%	94%
step1UCSFraw	226	224	226	226	226
step2UCSFraw	218	214	219	219	222
step1nationalraw	216	216	216	217	218
step2nationalraw	216	216	218	220	221

UCSF School of Nursing

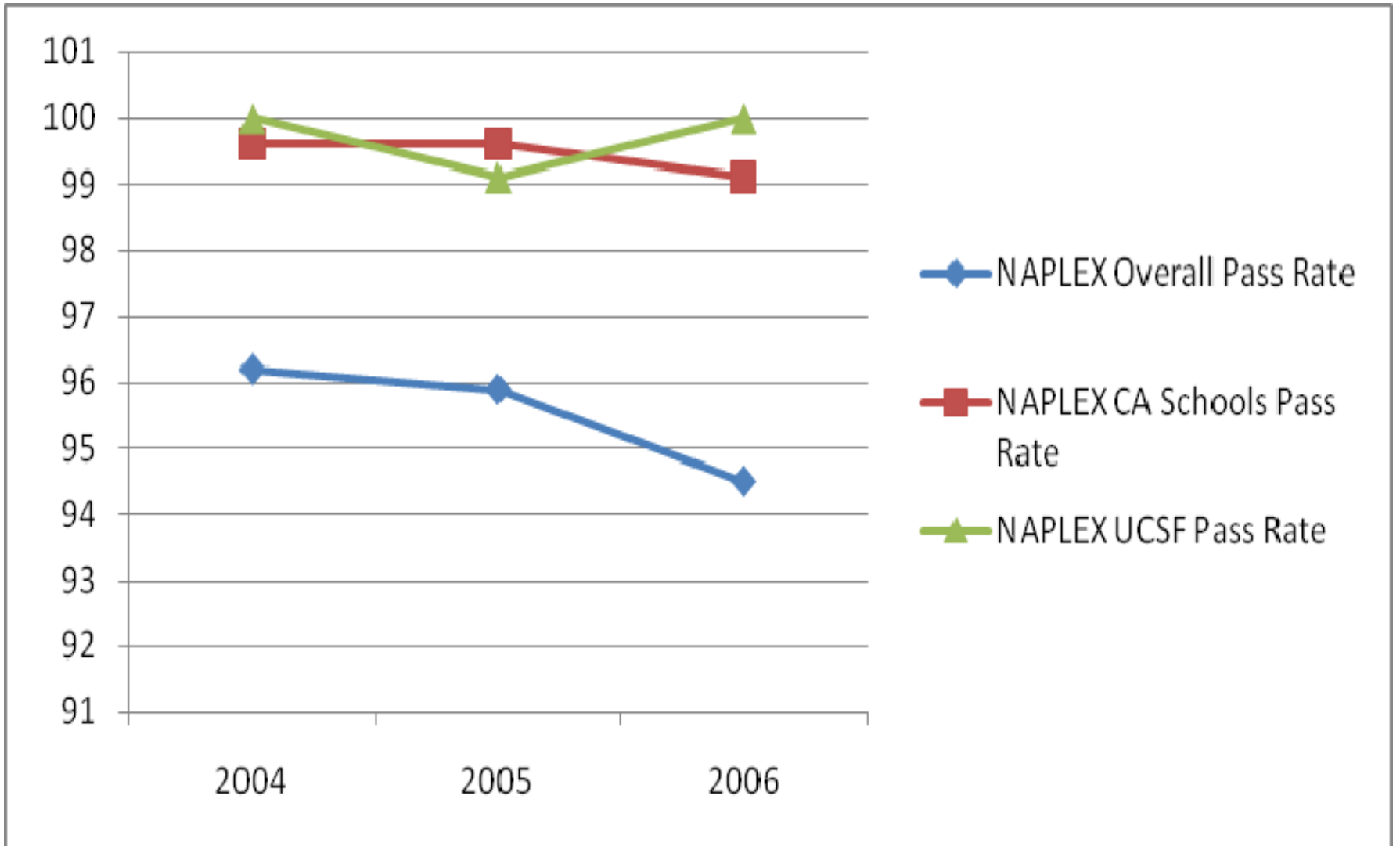
MS Specialty Certification Exam	Pass Rates for 2003 and 2004
Neonatal Nurse Practitioner	66-90% (NNP)
Acute Care Nurse Practitioner	95.24-100%
Certified Nurse Midwife	98% (CNM)
Family Nurse Practitioner	95.45%
Family Nurse Practitioner	100% (AANP)
Pediatric Nurse Practitioner	66.67%
Adult Nurse Practitioner	72.22-100%
Geriatric Nurse Practitioner	75-90%
Adult Psych and Mental Health Nurse Practitioner	66.67-60%

Note: Source is ANCC Nurse Practitioner Program Aggregate Data Reports for 1/1/2003 to 12/31/03 and 1/1/04 to 12/31/04 unless noted

UCSF School of Pharmacy

Pharmacist Licensure Exam Pass Rates			
	2004	2005	2006
NAPLEX Overall Pass Rate	96.2	95.9	94.5
NAPLEX CA Schools Pass Rate	99.6	99.6	99.1
NAPLEX UCSF Pass Rate	100	99.1	100
CPJE Overall Pass Rate	81.5	77.5	80.2
CPJE CA Schools Pass Rate	93.7	92.2	93.5
CPJE UCSF Pass Rate	94.9	87.6	92.4
NAPLEX = North American Pharmacist Licensure Examination			
CPJE = California Pharmacist Jurisprudence Examination			

UCSF School of Pharmacy



UCSF School of Pharmacy

